



**Japan Global Exchange Forum for Housing, Building and Urban Development**

# ■ Establishment

## JHBUD was established on Sep. 26, 2016



*Mr. Ryu YANO* was elected chairman



- *Mr. Hiroto IZUMI*, Special Advisor to the Prime Minister
- MLIT 's executives



- To utilize Japan's collective knowledge and expertise
- To promote international collaborative efforts
- To assist enterprises in their overseas activities in housing, building and urban development

Enterprises interested in housing, building and urban development in the international arena and Organizations engaged in international exchange activities working with the Japanese government and foreign governments and other foreign organizations

# ■Activity

- Japan-Sri Lanka Urban Development Seminar on Oct.10, 2016
- Japan-Myanmar Seminar for Urban Development and Housing on Jan.31, 2017





# ■ Ongoing Projects



Myanmar Affordable House as Pilot Project (Draft Image)

## Indonesia-Japan Joint Seminar

hold at Hotel Okura in Tokyo on 5 July, 2017  
attended by approx. 100 people



## Statement of Mr. Bochamad Basoeki Hadiomoeljono Minister of Public Works and Housing in Indonesia (Suara Pembaruan newspaper on Aug. 4, 2017)

- 5 innovations are necessary to promote infrastructure improvement
  1. Legal and Regulatory Framework
  2. Financing for Infrastructure Improvement
  3. Strong Leadership
  4. Coordination among Pertinent Organizations
  5. State-of-the-art Technology and Research Results



## Overseas Activities and International Cooperation of Japanese Government for Housing and Building in Indonesia

### Projects



① Human Habitats  
Research Institute  
(grant aid)



② Experimental housing  
(multiple dwelling  
optimum technology  
development project)

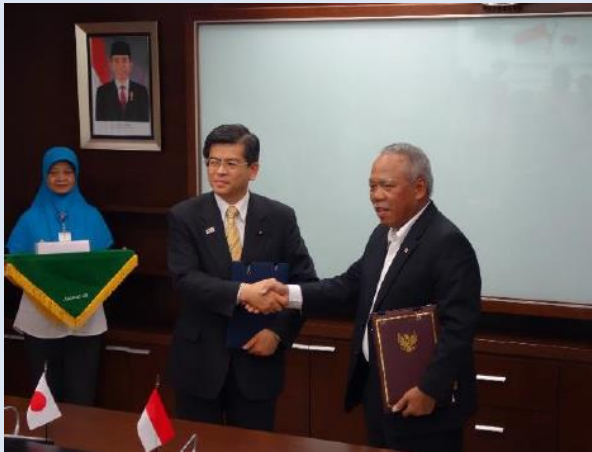


③ Full-scale structural test  
(governmental oversight  
improvement project)



## Overseas Activities and International Cooperation Housing and Building in Indonesia

### Recent Activities



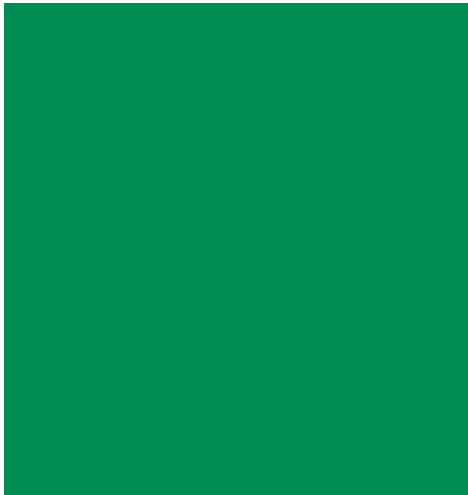
Signing of Ministerial MOU



Signing of MOU for Housing Finance

### Future Activities

- Collaboration in housing supply and housing finance for 1 Million Houses Program
- Information exchange of technical standards for earthquake resistance and energy conservation for buildings and houses
- Information exchange of governmental oversight improvement on building construction



1881: Former smelting worksite

2003: View of reforested smelting worksite



Teigo Iba

1691

Opening of the Besshi Copper Mine; permission granted by the Tokugawa Shogunate for use of timber from nearby forests.

1894

The Large-Scale Reforestation Plan was established. The Besshi mountains, devastated by excessive timber harvesting and smoke damage, were revived through large-scale reforestation.

**国土報恩**

1903

Organization and start of the first private "Operation Plan (Forestry Plan)"  
→ Establishment of "Sustainable Forestry" principle

# Sumitomo Spirit and Corporate Philosophy SUMITOMO FORESTRY

## <Sumitomo Spirit>

We conduct business that is beneficial to society based on the principles of integrity and sound management.

## <Corporate Philosophy>

The Sumitomo Forestry Group will utilize timber, which is an environmentally friendly natural material, to contribute to a prosperous society through all types of housing-related services.

### 4 Important Objectives

Provide wood products and materials from sustainable forests



- Promote traceability and environmental preservation.
- Promote forestry management that contributes to local communities' economic development.

Provide environmentally friendly homes



- Utilize domestic lumber
- Utilize energy saving technologies and build "smart houses".

Promote global warming countermeasures through our business activities

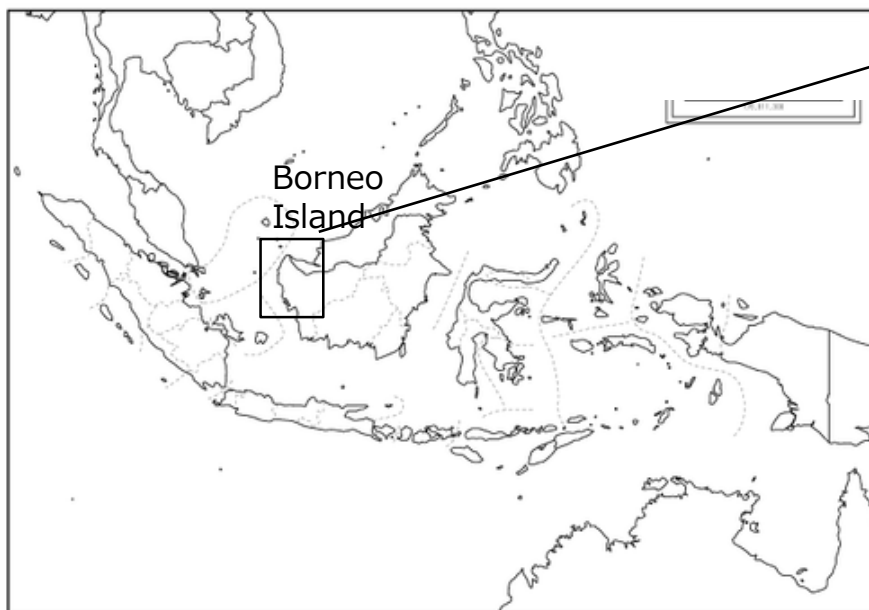


- Promote reduction of carbon footprints through utilization of biomass power generation, etc.

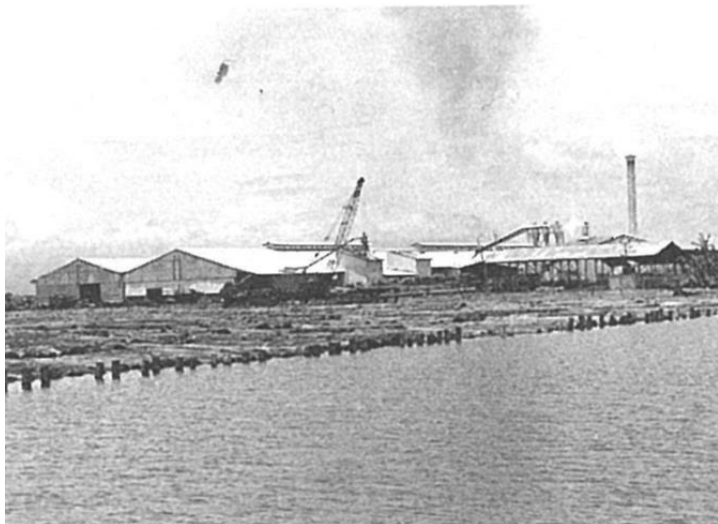
Promote employees' family-oriented lifestyle



- Create a workplace that allows each employee to realize his/her ideal work- life balance.



(1940) Started rubber plantation management in Borneo Island



(1970) Plywood manufacturing company established in Indonesia





# Social Contribution Activities in Indonesia

Happiness Grows from Trees



Scholarship support

Free distribution of seedlings



## Business session

Time and Date: Sep. 6 (Wed) 14:00 ~

Place : Fairmont Jakarta

Themes :

Group 1: Real Estate Development in Indonesia

Group 2: Housing and Building Construction Materials  
in Indonesia

Terima Kasih